



**RISE PROGRAM**  
**WALL HIGH SCHOOL**



## **RESTORATIVE**

A specialized program with a focus on restorative practices through a combination of evidence-based therapeutic interventions, self-help strategies and mind-body care.

## **INDIVIDUALIZED**

Each student's program will be individualized to meet their specific needs as planned by a team consisting of the student, parents, CST, teachers and clinicians.

## **SUPPORTIVE**

The specialized program is small, calm, and supportive. The faculty and staff working with RISE students are trained to provide a positive behavior approach to address the risk factors associated with emotionally based school avoidance and other mental health disorders.

## **EDUCATION**

Students in the RISE program have access to all academic classes offered at Wall High School and are afforded the opportunity to participate in classes through a variety of platforms.

# WHAT IS A THERAPEUTIC LEARNING ENVIRONMENT

The classroom design:

- Infuses different types of therapy like Cognitive Behavioral Therapy (CBT) and Dialectal Behavior Therapy (DBT) throughout the day via group and individual counseling
- Creates a culture that promotes self-awareness through the development of personal goals and self-regulation skills within the space/classroom
- Encourages students to understand, monitor, and assess their own emotional needs
- Provides a cohesive environment where academics and therapeutic support are intertwined
- Extends outside of school with Family Supports



RISE PROGRAM  
WALL HIGH SCHOOL





## QUICK FACTS

### WHO

Students in grades 9-12 with an IEP due to:

- School Refusal/Avoidance/Phobia
- Anxiety
- Depression
- Risk Behavior
- Emotional Regulation Difficulties

Wall High School students considered for the program are currently:

- Students who are struggling to meet graduation requirements and/or have chronic absenteeism
- Students on home instruction
- Students placed at an out-of-district school who meet the profile above

### WHAT

RISE is a program designed to assist students in an individualized, school-based therapeutic and academic learning environment.

### WHERE

RISE will be in a Wall High School classroom with an abbreviated school day.

### WHEN

Fall 2024

### WHY

- Rates of mental health needs increasing
- Students benefit from being educated in the least restrictive environment (LRE)
- Students have the opportunity to take full advantage of all WHS has to offer (academics, social, co-curricular)



## HOW WILL WE ACCOMPLISH THIS?

- Adjusted Arrival & Dismissal Times and Locations
- Individualized Student Schedules
- Small Class Size
- Mindfulness Approaches Integrated into Instruction
- Licensed Clinician Dedicated to the Program
  - Home Visits to Reduce School Refusal and Increase Attendance
  - Individual, Group and Family Counseling Services
  - Parent Support Groups
  - Social Skills Groups
  - Daily Check-Ins
  - On-going Behavioral Data Analysis/Anxiety Scales
  - Weekly Team Meetings
  - On-Site Screenings if Needed
  - Professional Development for Staff

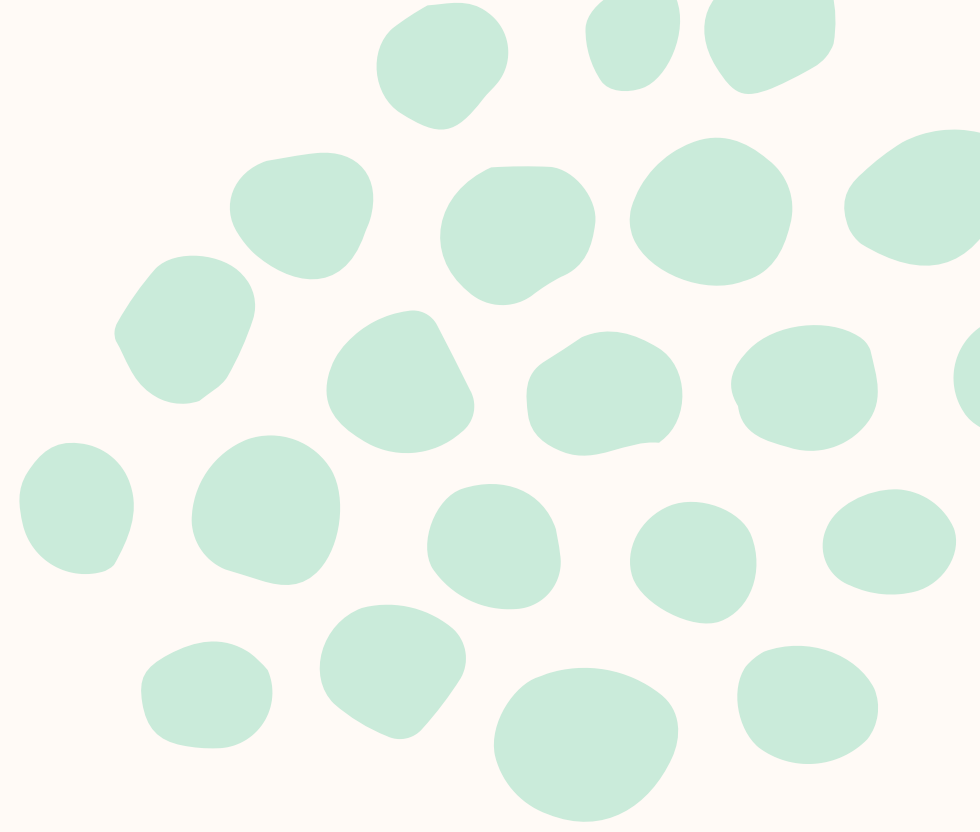
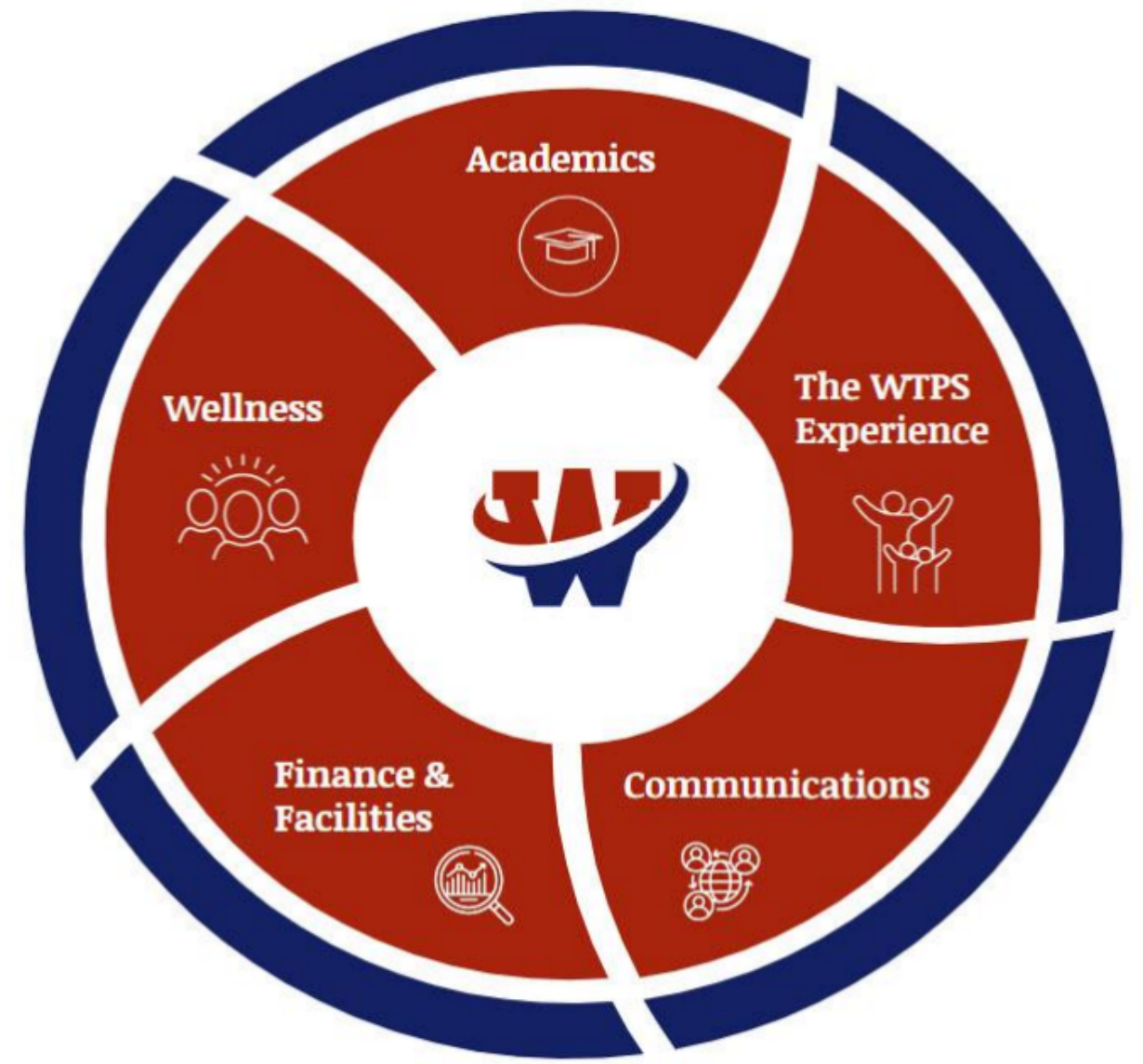


**RISE PROGRAM**  
WALL HIGH SCHOOL

# WHY NOW?

- The sunset of S3434 will free up the funding needed to establish a new program
- Aligns with the District's Strategic Objectives

# VISION 2026





## REFERENCES

- Butzer, B., Day, D., Potts, A., Ryan, C., Coulombe, S., Davies, B., Weidknecht, K., Ebert, M., Flynn, L., & Khalsa, S. B. (2015). Effects of a classroom-based yoga intervention on cortisol and behavior in second- and third-grade students: a pilot study. *Journal of evidence-based complementary & alternative medicine*, 20(1), 41–49. <https://doi.org/10.1177/2156587214557695>
- Cozolino, L. (2013). *The social neuroscience of education: Optimizing attachment and learning in the classroom*. W. W. Norton & Company.
- González, C., Sanmartín, R., Vicent, M., & García-Fernández, J. M. (2021). Exploring different types of school refusers through latent profile analysis and school-related stress associations. *Science progress*, 104(3), 368504211029464. <https://doi.org/10.1177/00368504211029464>
- Hagen, I., Skjelstad, S., & Nayar, U. S. (2023). Promoting mental health and wellbeing in schools: the impact of yoga on young people's relaxation and stress levels. *Frontiers in psychology*, 14, 1083028. <https://doi.org/10.3389/fpsyg.2023.1083028>
- Leduc, K., Tougas, A. M., Robert, V., & Boulanger, C. (2022). School Refusal in Youth: A Systematic Review of Ecological Factors. *Child psychiatry and human development*, 1–19. Advance online publication. <https://doi.org/10.1007/s10578-022-01469-7>
- Tekin, I., & Aydın, S. (2022). School refusal and anxiety among children and adolescents: A systematic scoping review. *New directions for child and adolescent development*, 2022(185-186), 43–65. <https://doi.org/10.1002/cad.20484>
- Krzeczkowski, J. E., Wade, T. J., Andrade, B. F., Browne, D., Yalcinoz-Ucan, B., Riazi, N. A., Yates, E., Tagalakis, A., & Patte, K. A. (2022). Examining the mental health of siblings of children with a mental disorder: A scoping review protocol. *PloS one*, 17(9), e0274135. <https://doi.org/10.1371/journal.pone.0274135>